



COMMITTED TO ENGINEERING EXCELLENCE



About us

Neoplan Trading FZ (LLE) offers an expansive array of industrial essentials which encompasses a wide spectrum, including pipes, fittings, flanges, valves, gaskets, expansion joints, acoustic panels to name a few. These offerings are backed by our seasoned team's proficiency making us a trusted ally across the GCC Industrial sectors such as Oilfield, FMCG, Marine, Energy, Construction, MEP, Entertainment & Recreational sectors. Clients within and beyond these domains can confidently rely on our unmatched mastery to provide innovative solutions.

We design and implement cost-effective project solutions that enhance our client's business prospects. We stand as the trusted partner for ambitious projects across the GCC region. Partnering with Neoplan means more than suppliers; we are architects of success, sculpting outcomes that drive businesses forward. Step into a realm where excellence isn't just a target; it's the standard by which we operate.





www.neoplantrading.com

Stockist Mild Steel

PIPES (SEAMLESS / WELDED)

Sizes: 1/2" to 24" (Seamless) / 4" to 48" (Welded)
END: PLAIN / BEVEL.
LENGTH: SRL/DRL (6 to 18 meters)
SCHEDULE: Sch 40, Sch STD, Sch XS, Sch 80.
GRADE: API 5L B/A 106B/A 53 Grade B/X 42, NACE MR 01-75.
STANDARD: API | ASTM and more.



BW FITTINGS

Sizes: 1/2" to 24" (Seamless); 36" to 72" (Welded)
SCHEDULE: Sch 40, Sch STD, Sch XS, Sch 80.
GRADE: Multiple grades of Carbon Steel.



FORGED FITTINGS

Sizes: 1/2" to 4"
CLASS: 3000, 6000, 9000
END: SOCKET/THREADED/PLAIN.
GRADE: Multiple grades of Carbon Steel.



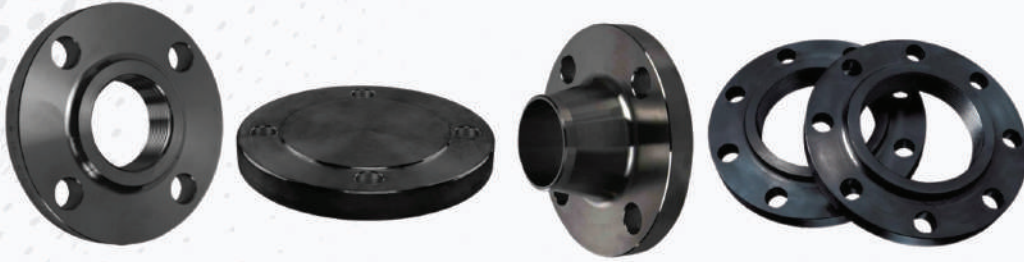
Stockist Mild Steel

FLANGES

Sizes: 1/2" to 36"

TYPE: BLIND, WELDNECK, SOCKET WELD, SLIP ON, THREADED.

Grade: Multiple grades of Carbon Steel.



VALVES

Sizes: 1/2" to 24"

Class: 150LBS to 2500lbs | PN 10 TO 40 | 3000PSI TO 20000PSI.

TYPE: BALL, GATE, GLOBE, PLUG, BUTTERFLY, PRESSURE RELIEF, NEEDLE VALVES.

FUNCTIONS: ISOLATION, REGULATION, SAFETY RELIEVE, NON-RETURN, SPECIAL PURPOSE.

GRADE: Multiple grades of Carbon Steel.



EXPANSION JOINTS

Sizes: 1/2" to 12" END: PN16 / CL150

MATERIAL: GI EPDM



Stockist

Stainless Steel

PIPES (SEAMLESS / WELDED)

Sizes: 1/2" to 24" (Seamless); 26" to 48" (Welded).
END: BEVEL END/ BEVEL.
LENGTH: SRL/DRL (6 to 18 Meters).
GRADE: Multiple grades of Stainless Steel.



SS BW FITTINGS

Sizes: 1/2" to 24" (Seamless); 4" to 48" (Welded).
THICKNESS: 1.0mm to 60.00mm.
END: BEVEL END.
SCHEDULE: S10, S20, S30, S40, STD, 560, SXS, S80, S100, S120, S140, S160, SXXS.
FUNCTIONS: ISOLATION, REGULATION, SAFETY RELIEVE, NON-RETURN, SPECIAL PURPOSE.
GRADE: Multiple grades of Stainless Steel.



SS FORGED FITTINGS

Sizes: 1/2" to 4"
CLASS: 3000, 6000, 9000
END: SOCKET/THREADED/PLAIN
GRADE: Multiple grades of Stainless Steel.



Stockist Stainless Steel

FLANGES

Sizes: 1/2" to 36"

TYPE: BLIND, WELDNECK, SOCKET WELD, SLIP ON, THREADED

SCHEDULE: Sch 40, Sch STD, Sch XS, Sch 80

GRADE: Multiple grades of Stainless Steel.



VALVES

Sizes: 1/2" to 24"

CLASS: 150LBS TO 2500LBS | PN 10 TO PN 40 | 3000PSI TO 20000PSI

TYPE: BALL, GATE, GLOBE, PLUG, BUTTERFLY, PRESSURE RELIEF, NEEDLE, VALVES

FUNCTIONS: ISOLATION, REGULATION, SAFETY RELIEVE, NON-RETURN, SPECIAL PURPOSE

Grade: Multiple grades of Stainless Steel.



FIRE FIGHTING FITTINGS & VALVES



Acoustic Solutions

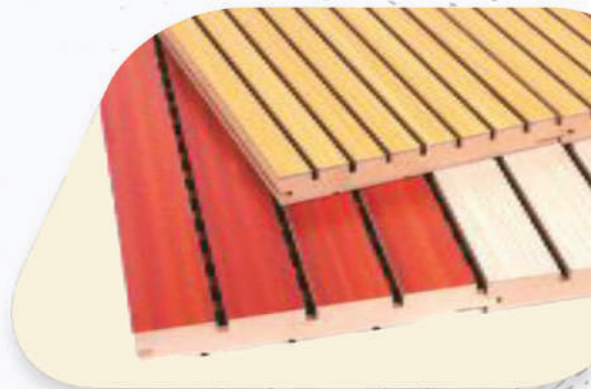
"Experience Sound in its Purest Form with our Acoustic Systems"

Introduction

We specialize in offering soundproofing and construction specialty solutions. Our core mission revolves around assisting you in crafting tranquil, quieter, enhanced, and exceptionally efficient environments. Our unwavering commitment rests on the delivery of premium-grade products complemented by a peerless standard of customer service.

Grooved Acoustic Panels

Material Options: Pre-Laminated HDF/PVC Board.
Thickness: 18 mm **Groove Details:** 3.2 mm diameter holes at an interval of 14128 mm c/c. **Applications:** For the walls of Auditoriums, Theaters, Banquet Halls, Convention Centres, Meeting Halls, Conference Rooms, Libraries, Places of Worship. **Installation:** On GI Channel Grid for wall Acoustic Panels, with an air gap or with acoustic insulations. **Material Backing Sizes:** 575mm x 2440mm, 1200mm x 2440mm and more



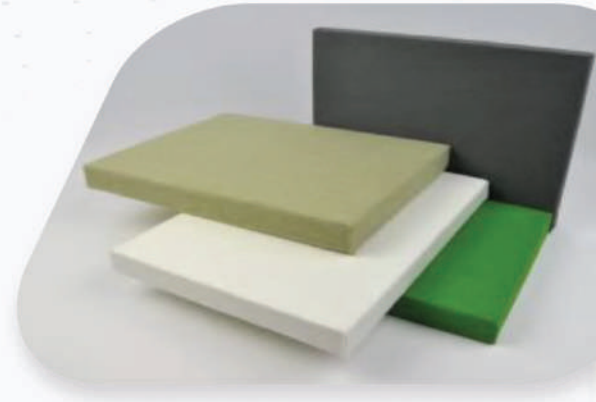
Fabric Wrapped Acoustic Panel

- High Performance Architecturally Decorative.
- Custom Engineered & Manufactured.
- Reduced Noise & Reverberation.
- 100% Custom Colors and Sizes Product Specs.

Material: High density glass fiber, wood fiber, perforated board or Melamine foam with woven fabric and micro-perforated vinyl facings.



Pattern: Our patterns range from flat-faced with square or radiused corners to beveled, radiused, or mitered edges, offering diverse design possibilities. **Features:** Our products are meticulously custom-designed and manufactured to cater to every unique requirement, ensuring versatility. **Applications:** These decorative sound-absorbing panels find ideal use in both wall and ceiling acoustic applications. They are exceptionally well-suited for a wide array of settings, including offices, schools, meeting rooms, music rooms, hotels, auditoriums, recording studios, and broadcasting studios, where achieving optimal speech privacy and intelligibility is paramount. **Thickness:** Available in various thicknesses, from 6mm to 15mm for ceilings, and 25mm for walls. **Size:** Choose from standard sizes such as 600x600mm or 600x1200mm, or opt for custom dimensions of up to 1200x2400mm, providing flexibility to meet your specific project needs.



Installation

There are two distinguished methods for the application of fabric-covered wall panels. The first entails the utilization of self-adhesive acoustic fabric-coated panels, while the second involves the application of a solid-based liquid adhesive. It is advisable to let our experts handle the adhesive application process to prevent potential residue or traces from exceeding the panel's dimensions. In some cases, an alternative, highly effective option is the use of PVC tracking paired with stretch wall fabric, ensuring a seamless and professional finish.



High Density Acoustic Screens

Our acoustic screens comprise a substantial 40mm thick high-density glass wool panel enveloped in acoustic sound-absorbing fabric, thoughtfully applied to both the front and rear surfaces. To promote optimal air circulation within rooms, our screens are elevated with 100mm high feet. These high-density glass-fiber panels, elegantly ensconced within aluminum profiles, boast an array of fabric color choices. Depending on the spatial requirements, these panels can be seamlessly joined together, the aluminum frames offer the flexibility of customization, allowing them to be painted in a color of your preference to seamlessly blend with your aesthetic vision.



Expansion Joint Profiles

"Strength in Flexibility: Explore Our Range of Profile Systems"

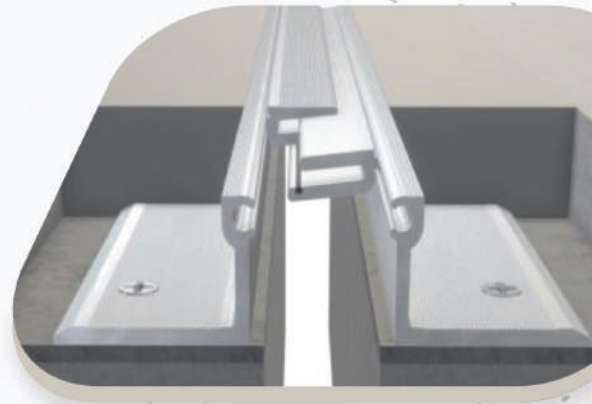
Wall Profiles

Our wall profiles feature meticulously designed aluminum covers that cater to both interior and exterior seismic applications, offering exceptional concealment for deeper floor finishes. The center pan of these profiles is purposefully recessed to accommodate a variety of flooring options. Moreover, the caulk joints are engineered to allow for minor thermal movement by expanding and contracting as needed. In the event of a seismic occurrence, the center pan assembly gracefully elevates and then seamlessly returns to its original position, exemplifying the resilience and reliability of our seismic profiles.



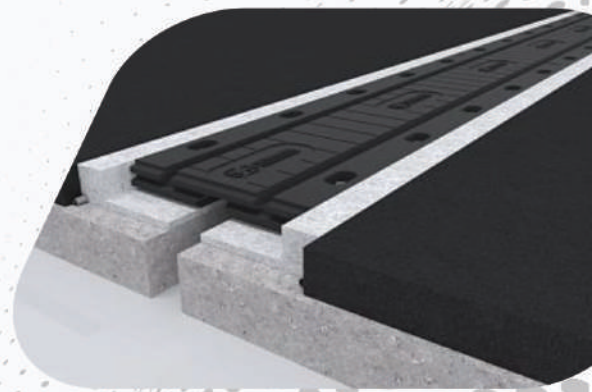
Heavy Duty Floor Profiles

These profiles are composed of a metal flush-mounted wall and ceiling cover system, have been crafted for substantial interior joints where achieving a minimal sight line is of importance. What sets these profiles apart is their distinctive panel attachment design, engineered to accommodate thermal expansion and disengage gracefully in the event of seismic activity, thereby safeguarding adjacent walls from any potential damage. The cover systems come factory-primed and offer the flexibility of on-site painting, allowing seamless customization to effortlessly complement virtually any surrounding wall or ceiling finish.



Bridge Expansion Joints

Our expansion joints are designed to accommodate movements of up to 35 mm, comprising a fusion of waterproof rubber and steel plates. These sophisticated systems are meticulously fabricated in a controlled factory environment, subject to high-temperature and high-pressure processes, ensuring a robust bond between rubber and steel components. These joints are guaranteed against corrosion, providing a durable solution. The resilient rubber material demonstrates exceptional resistance to surface contaminants such as oil, grease, and chemicals, while also offering UV resistance, making it resistant to the effects of snow and salt exposure.



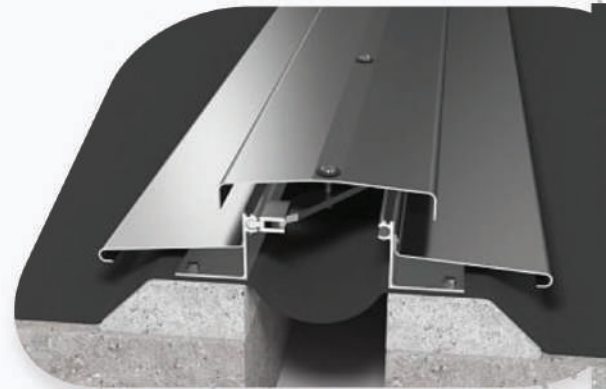
Floor Finish Profiles

Crafted for both interior and exterior seismic applications, these profiles excel in concealing deeper floor finishes. The cover plate has a generous recess that accommodates thicker floor finish materials, reaching up to 1 inch in depth. Designed with precision, the caulk joints are engineered to gracefully expand and contract, accommodating minor thermal movements. In the event of seismic activity, the center pan assembly elegantly lifts and seamlessly returns to its original position. Available in joint sizes ranging from 2 to 4 inches, and custom-made options are available for larger sizes to suit specific requirements.



Roof Cover

Designed with seismic applications in mind, our aluminum roof cover offers a seamless and waterproof transition for exterior wall seals. This system is thoughtfully equipped with custom, factory-made transitions to guarantee a watertight seal. Joint sizes are available in a range from 3 to 16 inches, with custom-made options are available for larger sizes.



Entrance Mats

"Flooring Solutions Made Easy and Elegant"

Revolving Door Systems

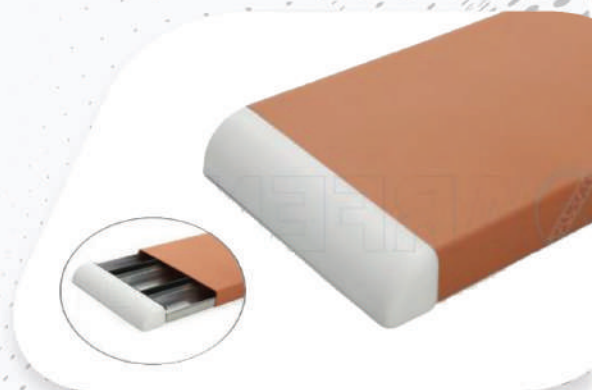
Our entrance mat system, renowned for its durability, offers surface or recess-mounted options and stands as the gold standard in entrance flooring. It is available in a wide array of finish and tread insert colors to seamlessly complement any decor. It features an aluminum body with a carpet or carpet top surface, suitable for both frame and pool-type applications. In particular, our elegant series boasts a large carpet with a brushed aluminum body and top surface, making it suitable for framed and poolside use. Choose from a variety of carpet colors, including black, gray, camel, red, and brown, with a mat depth of 22 mm.



Wall and Corner Protection Systems

Wall Protection

This 200mm wide and 35mm deep band is seamlessly mounted against the wall using a continuous aluminum profile and a resilient rubber insert at its base. Designed for both functionality and aesthetics, it effectively absorbs shocks while adding a decorative touch with its vinyl cover, resulting in a cohesive and visually appealing system. With a range of 12 different color options, it can be installed on various wall types using different fixing elements spaced at intervals of 50-60 cm, highly suited for versatile applications.



Handrail Wall Protection Systems

Our wall protection band boasts 4-meter length, 152 mm width and 85 mm depth, features a continuous aluminum retainer securely fastened to the wall using mounting brackets spaced in intervals. Crafted with a vinyl-coated finish, this wall protection system not only resists scratching but also effectively absorbs impacts through its lower rubber inserts. Additionally, it offers versatile solutions with its decorative right and left returns. The profile is available in an extensive palette of 32 different colors. Notably, its specific antibacterial formulation, free from heavy metal ingredients, makes it an ideal choice for healthcare settings such as hospitals, nursing homes, and clinics.



Handrail System

Our versatile handrail system serves not only as a practical support in hospital corridors and common areas but also as an elegant railing solution for staircase openings. Available in a range of color options, its warm and decorative texture sets it apart. With unique end parts not found in other railings, it is perfectly suited to various settings, including schools, hotels, malls, business centers, and residences. With 4-meter lengths, our handrail profiles come in a diverse palette of 32 different colors, allowing you to tailor the look to your specific needs.





NEOPLAN

TRADING & CONSULTANTS FZ LLE

University City Road, Industrial Area 12, P.O. Box: 151278,
Sharjah, U.A.E. Tel:+971 6 531 3538 , Fax: +971 6 531 3528
Email: neoplan@neoplantrading.com | www.neoplantrading.com